



# Promenade

Southport, PR9 0AU

**£1,100 Per Month**

Flexi-Agent delighted to bring this stunning and spacious two-bedroom duplex apartment to the rental market. This desirable apartment has been designed for ease and comfort, being able to be moved into and enjoyed straight away. It is located a stone throws away from the Marine Lake and the Promenade and also Lord St which offers a plethora of amenities such as; shops, boutiques, travel links, restaurants and bars.

The apartment briefly comprises, to the ground floor; An entrance hallway, an open plan kitchen/dining area, a good sized double bedroom with en-suite and WC.

Stairs lead to the first floor and a spacious living area with views across the lake, further stairs lead up to an elevated dining area and another good sized bedroom with en-suite.

Externally the property benefits from secure off road parking.

Viewings are available on request.

Deposit £ 1384.61

## Viewing

Please contact our Flexi-Agent Southport Lettings Office on 01704 889455 if you wish to arrange a viewing appointment for this property or require further information.

- Two bedrooms
- Duplex apartment
- Highly sort after location
- Sea views
- Secure off road parking
- En suite
- Spacious living space
- Deposit £1384.61
- Viewings available on request

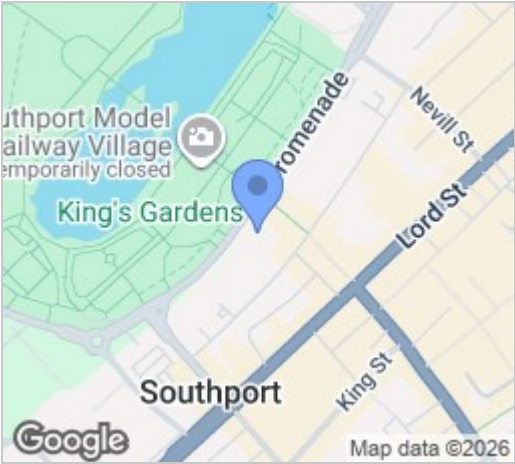




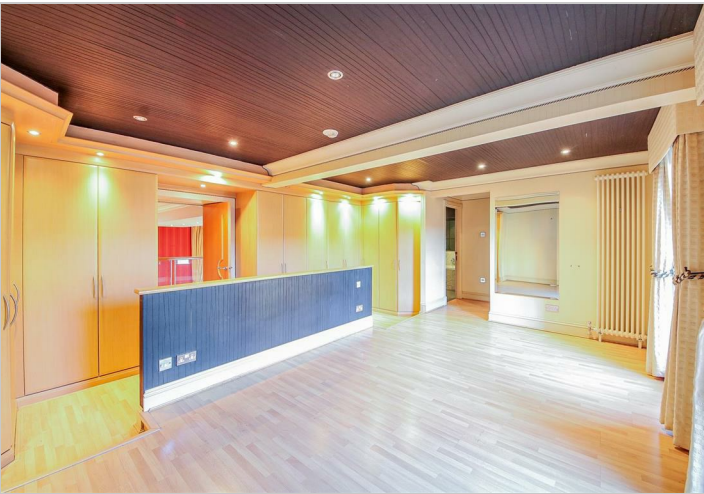
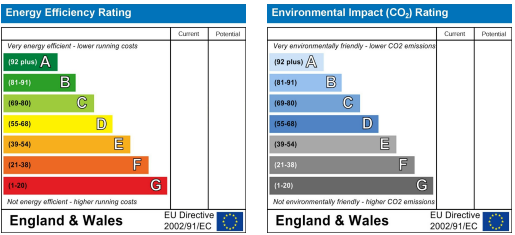
Floor Plan



Area Map



Energy Efficiency Graph



These particulars, whilst believed to be accurate are set out as a general outline only for guidance and do not constitute any part of an offer or contract. Intending purchasers should not rely on them as statements of representation of fact, but must satisfy themselves by inspection or otherwise as to their accuracy. No person in this firms employment has the authority to make or give any representation or warranty in respect of the property.